

# Welcome

Berwick Reorganisation Parent/Carer Update  
20<sup>th</sup> March 2025

WARNING...there is a lot of information in these slides (mostly so I don't miss something important!!) but hopefully it will all makes sense by the time we finish :)

# Timeline so far...

- The timeline for the changes across the Berwick Partnership of schools remains unchanged with the change from the current 3-tier organisational structure to a 2-tier structure for the start of the academic year 2026-2027 (1 September 2026).
- This means that we have 4 school terms during which all preparations for these changes need to be completed.
- This is not going to be an easy journey as we will need to maintain all that we currently do while managing staffing changes, building changes, curriculum & assessment changes and all of the myriad tasks required to enact this significant change for our children & schools successfully.

# Timeline - key dates

- Summer term 2025 - there are no planned changes to our schools.
- Current Year 4 cohort will remain at Wooler First School as they move up into Year 5 for September 2025 (no parental applications are needed for this). Year 8 will transfer to high schools ready to start in Year 9 in September 2025 (normal transition).
- July 2025 - building modification works to commence (phased works through to summer 2026).
- September 2025 - Wooler First School will operate with the nursery and year groups from Reception to Year 5. Glendale will operate with 3 year groups, Year 6, Year 7 & Year 8.
- Summer 2026 - WFS Year 5 will move up to become Year 6 within WFS. All 3 GMS year groups will transition together to high school for September 2026 into Year 7, Year 8 & Year 9 (transition planning has commenced for this between GMS, BMS, TMS and BA - more information to follow).
- At the end of the summer term 2026 Glendale Middle School will close and from 1 September 2026 Wooler First School will become a primary school (planned name and uniform change at this point as we become a primary school).
- Our nursery will be unaffected by these changes (other than moving into the main building).

# Staffing

- Initial redeployment of 'at risk' staff across the 3 closing middle schools was undertaken over the autumn and spring terms to recruit/deploy staff to the planned staffing structures across the partnership primary schools and Berwick Academy as a secondary school.
- This work resulted in many, but not all vacancies being filled. There are still colleagues across the 3 middle schools whose future is uncertain from September 2026 onwards. NCC and Unions continue to work to support these colleagues either looking for employment in schools or considering other options.
- NCC have committed to support the 3 middle schools to retain staff until closure to support teaching & learning and the day-to-day operation of the schools. There will be no compulsory redundancies during this period.
- We are unique in our situation in the partnership operating two schools on a single site with shared governance. Further work is being undertaken this spring with regards to the school administration team, catering/lunchtime team and our facilities team whose role operate across our schools. We are also working on how we organise our Early Years as we implement an integrated unit across the nursery and Reception class while managing an expansion in childcare entitlement for families made by the government.

# Primary School Staffing

Current teaching and learning staff at Wooler First School and Little Acorns Nursery will not be directly impacted by the changes as we become a Primary School.

Two members of the Glendale teaching team will be moving to join WFS over the next 18 months. Mrs Easton in September 2025 (likely to be our Year 5 teacher) and Miss Leishman in September 2026 (teacher deployment for the 2026-2027 academic year will be confirmed for all year groups in due course).

At this point in time we have a good curriculum plan for Glendale for 2025-2026 and the staff to deliver it well.

# Curriculum & Assessment

- Both WFS and GMS will continue to manage curriculum and assessment demands over the next 18 months. This requires continuing close collaboration but with two different foci for the two schools.
- **Glendale** will be managing the curriculum for a reduced number of pupils to ensure full subject coverage and all of our usual 'Glendale' activities and events. (Pupil numbers are projected to be less than 50 children across Yr6 to Yr8 in the 2025-2026 academic year).
- **Wooler** are developing a primary curriculum in preparation to receive upper KS2 from September 2025 and develop the knowledge, skills and understanding needed for teaching & learning in upper KS2 and also SATs.
- Collaboration between WFS and GMS individuals and teams is ensuring that this work is successful.

# First to Primary - feedback please

- Beyond the key aspects of curriculum, assessment and staffing we will also be undertaking wider work looking at all aspects of the Primary School that we are creating:

School name

PTA/Friends

Assemblies

Uniform & Logo

Year 6 leaders

PPA

School Council

Community  
Engagement &  
Volunteers

Clubs

Staff CPD

Rewards & sanctions

Forest School

Swimming

Class names

Website

Buildings

Trips,  
residential &  
seasonal events

Structure of the  
school day

Breakfast &  
After-school  
clubs

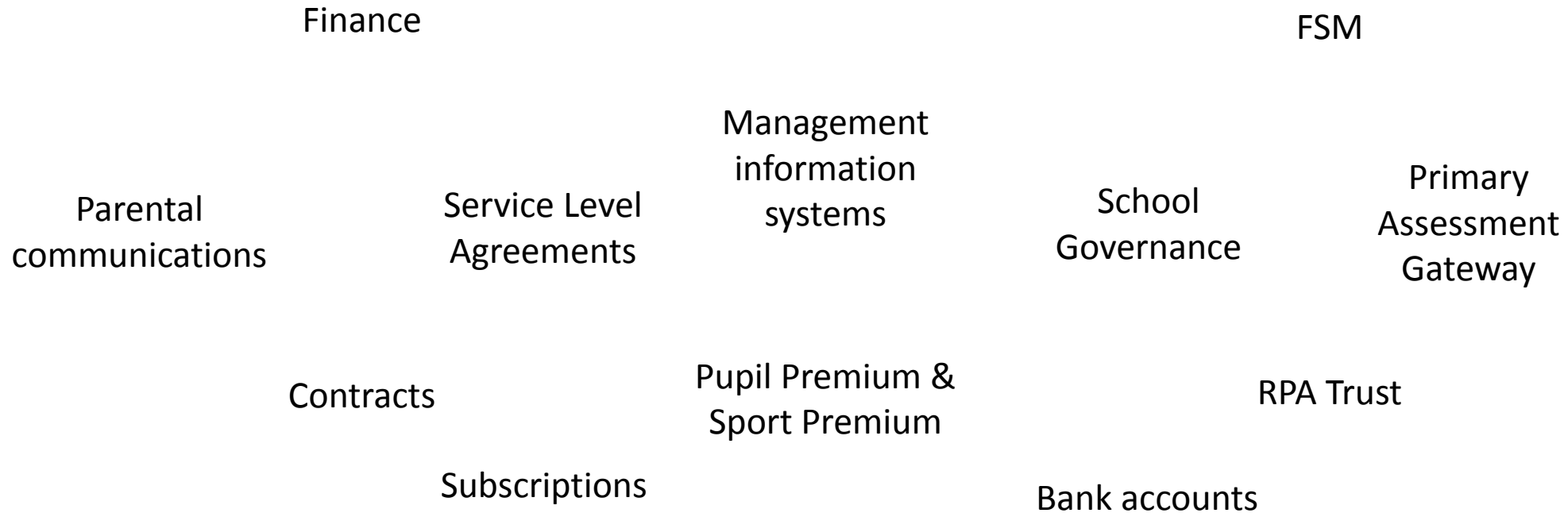
Lunchtime  
arrangements

Subject  
Leadership



# Business of the schools

- Alongside all of the above we also need to complete the work needed to separate the schools. This covers aspects such as:



# Buildings

- Our buildings/facilities/grounds will be changing, this will need to take place while we are living within the building. This will present us with more challenges on top of those already outlined today to ensure that neither children or staff are disadvantaged.
- NCC have have appointed contractors to undertake the necessary works. This includes plans for the Wooler Family Hub to be located here on our site.
- Working with NCC and Robertsons (appointed contractors) we have developed a phased plan for building works which will commence over the summer this year (starting July 2025 - completion anticipated for around May/June 2026).
- There are to be 4 phases to the works each presenting a different challenge for us to manage. Each phase will take out elements of our buildings and require flexibility and patience. Particular focus is being given to ensure we retain the specialist elements required by our Early Years and our KS3 curriculum.

## Building plans



08793-SPACE-Z6-00-D-A-01002-GA Plan - Proposed - Level 00 (6).pdf



08793-SPACE-Z6-01-D-A-01002-GA Plan - Proposed - Level 01 (6).pdf

## Works phasing plan



Wooler Phasing Ground Floor Rev B.pdf



Wooler Phasing First Floor Rev B.pdf

## EYs & Landscape plans



Wooler EYs plan 25.11.24.pdf



WPS-COL-ZZ-XX-DR-L-1001\_P04.pdf

## Wooler Family Hub

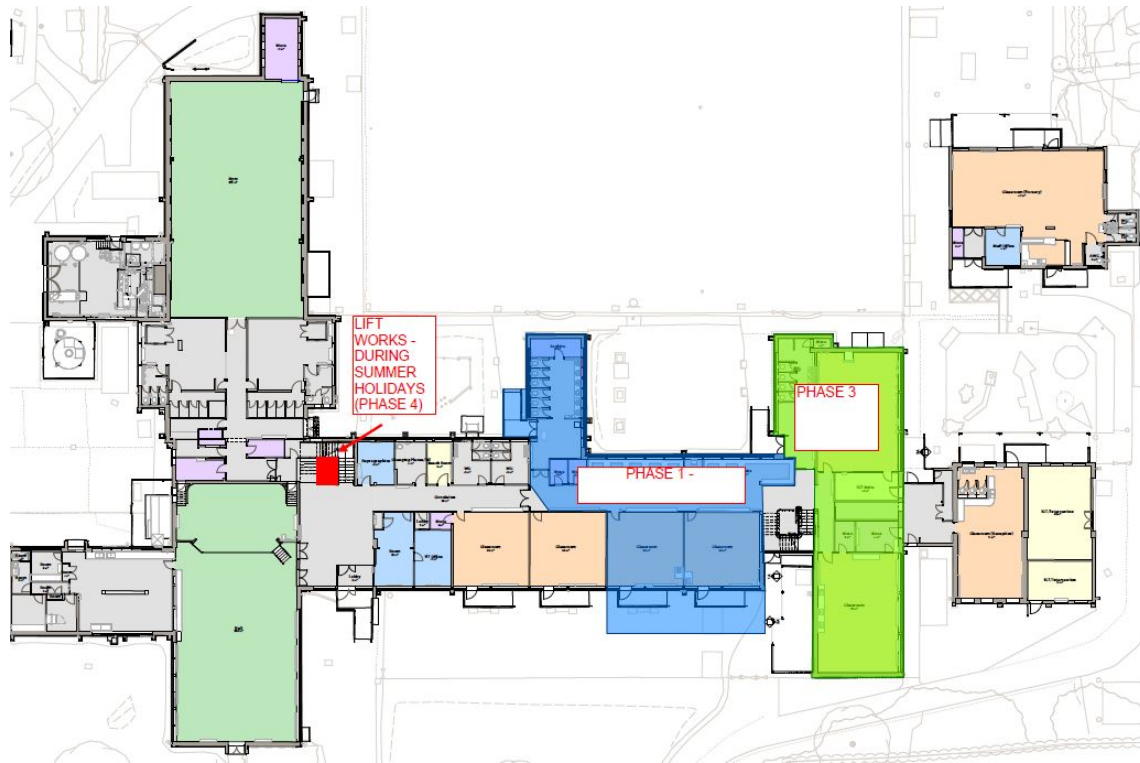
Building plans can be found on our school websites

\*KS3 specialist teaching facilities to move into vacated nursery building - October 2025

# Works phasing plan (provisional)

- Phase 1 picks up the Early Years area (impact on all 4 WFS classes - July to October 2025).
- Phase 2 moves upstairs and looks at the practical classroom and staff workroom (impact on GMS science and food technology rooms October 2025 to February 2026).
- Phase 3 drops back down to the family hub area (impact on GMS technology and Art rooms - February to May 2026).
- Phase 4 upstairs to look at the corridor area around the ICT suite and classroom / library (impact on computing for WFS & GMS - July/August 2026).

Phase	Start date	Duration	Complete
Phase 1	21st July 2025	14w 4d	31st October 2025
Phase 2	27th October 2025	16w	27th February 2026
Phase 3	23rd February 2026	13w 1d	29th May 2026
Phase 4	21st July 2025	5w 4d	29th August 2025



# This term...

- This term we have been focusing on the following:
  - Support for colleagues still 'at risk'.
  - Identify training requirements for staff.
  - Curriculum mapping for the primary school & for Glendale over the next 18 months.
  - Finalise building plans and agree phasing of works (including impact on teaching and learning and 'normal' school operations).
  - Confirm landscape plans.
  - Explore community use of wider site including the gym and playing fields.

# Next term...

- Next term we will focus on the following:
  - Continue to deliver all normal school activities for our pupils.
  - Continue support for colleagues still 'at risk'.
  - Implement training for identified staff in response to reorganisation.
  - Continue shared work on curriculum mapping for our primary school & for Glendale over the next 18 months.
  - Transition planning summer 2025 & for summer 2026
  - Prepare for commencement of building works and confirm operational planning for our schools during these works.
  - Confirm plans for EYs outside provision and engage contractor for these works .
  - Confirm community use of wider site including the gym and playing fields.

Questions????

Your feedback.